

Pitt County Senior Center/COA

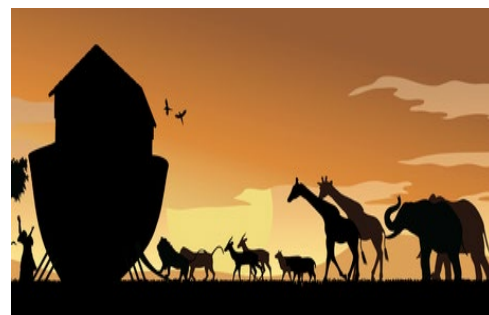
Presents a Fabulous Trip To

Ark Encounter, Lexington & Louisville



Your 4 Day/3 Night Package Includes:

- ❖ 3 Nights Hotel Accommodations
- ❖ 3 Breakfasts at Your Hotel
- ❖ 2 Wonderful Dinners Including 1 Dinner at **Emzara's Kitchen** at the Ark Encounter
- ❖ **Experience the Ark Encounter - Ark Encounter** features a full-size **Noah's Ark**, built according to the dimensions given in the Bible. Spanning 510 feet long, 85 feet wide, and 51 feet high, it features three decks filled with scores of world-class exhibit bays that allow you to experience what life on the ark may have been like. See how this amazing structure was built; Learn how **Noah** could have cared for all the animals and how the Ark was big enough to fit them all on board; See how Noah's family lived and cared for the animals.



- ❖ **Admission to the Creation Museum** - At the 75,000-square-foot Creation Museum, the pages of the Bible dramatically come to life. Journey through biblical history as you marvel at the Garden of Eden alongside Adam and Eve. Spot the serpent coiled among the tempting fruit and discover more about Noah's Ark and the Flood. You'll see state-of-the-art exhibits, fossils, and even a full-size Allosaurus skeleton. Then tour the beautiful botanical gardens as you make your way to the petting zoo and camel rides.

the Flood. You'll see state-of-the-art exhibits, fossils, and even a full-size Allosaurus skeleton. Then tour the beautiful botanical gardens as you make your way to the petting zoo and camel rides.

- ❖ **Visit The Kentucky Derby Museum & Churchill Downs** - The Kentucky Derby Museum is one of the premier attractions in Louisville celebrating the tradition, history, hospitality and pride of the world-renowned event that is the Kentucky Derby. Explore the famous racetrack on a guided tour, experience two floors of interactive exhibits, and get your heart racing and emotions soaring watching "The Greatest Race," an epic 18-minute movie in a 360°, 4K high resolution theater!
- ❖ **Admission to the Louisville Slugger Museum & Factory** - Experience history-in-the-making as you stroll through the actual factory where world-famous Louisville Slugger bats are created. Plus, everyone receives a miniature souvenir bat at the end of the tour!
- ❖ **Enjoy a Guided Tour of Louisville, KY**
- ❖ Standard Taxes, Baggage Handling & Meal Gratuities
- ❖ Deluxe Motor Coach Transportation



For Information and/or Reservations, Please Contact:

Cyndi Shimer @ 252-752-1717 Ext. 205

Date of Trip: April 27 – April 30, 2025

Price: \$819.00 per person – double occupancy

Travel Protection: Travel Protection can be purchased at **\$92.00/person** – double occupancy. If you wish to purchase Travel Protection, please send in a separate check made payable the PML Travel & Tours. Travel Protection should be purchased at the time of your initial deposit to ensure full benefits. **Insurance premiums are non-refundable.** Group cancellation policy applies. See group leader for details.
Fuel and vendor surcharges may be assessed.



PML
travel & tours inc.